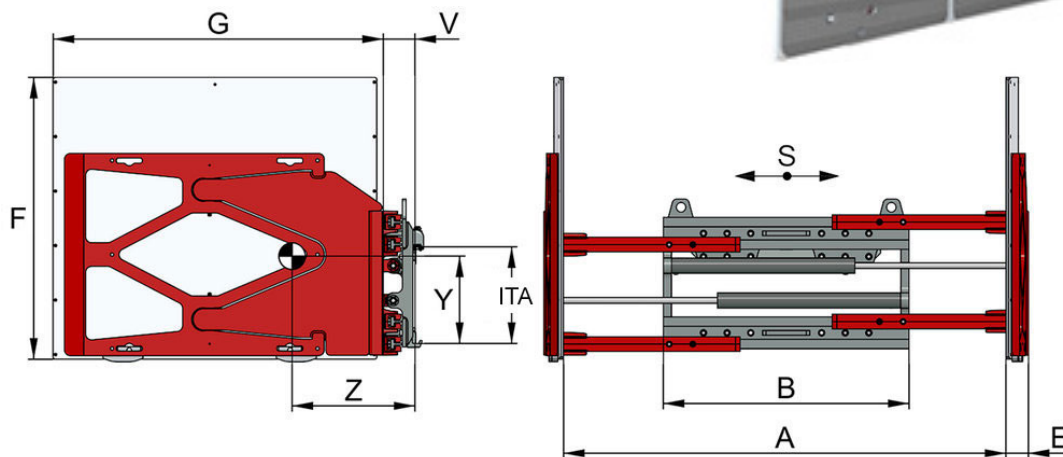
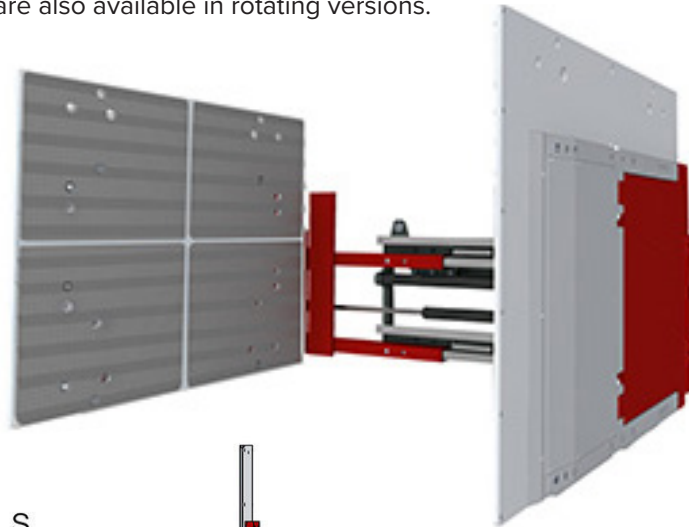


OEA Kaup CARTON / APPLIANCE CLAMPS

OEA Kaup's Appliance and Carton Clamps are used worldwide to transport heavy appliances and consumer electronics. The clamp arms and/or clamp body are able to independently recognize how many loads should be lifted. The system then regulates the required pressure needed to handle the load without damaging it. The clamp wear pads offer additional protection of the load. Clamps are also available in rotating versions.

Carton/Appliance Clamp

- » Separate independent side shift function allows full stroke regardless of arm position
- » Unique 4-piece pad standard; each pad can be rotated for wear in 16 positions
- » Cylinder and piston rod protection available for HD applications



Carton Clamp

Product #	Capacity lb	LCD in	S in	A in	B in	E in	F in	G in	ITA class	V in	Z (CofG) Hor. in	Y (CofG) Vert. in	Weight lb
MINIMUM	3,300 lb	--	--	13"	--	--	--	--	II	--	--	--	--
CCB1-025-4848-2-A	2,507 lb	24"	3.9 +	22-77.2"	42.5"	2.2"	47.2"	47.2"	II	5.1"	17.4"	13.1"	1,437 lb
CCB1-036-4848-2-A	3,682 lb	24"	3.9 +	22-76"	42.5"	2.4"	47.2"	47.2"	II	5.6"	18.1"	18.8"	1,521 lb
CCB1-036-4848-3-A	3,682 lb	24"	3.9 +	22-76"	43"	2"	47"	47"	III	6"	18"	19"	1,521 lb
MAXIMUM	17,000 lb	--	--	94"	--	--	--	--	III	--	--	--	--

*All dimensional sizes are nominal

CARTON APPLIANCE CLAMPS Load Backrest models

Product #	B	H	Class ITA	Weight
LBCCB1-425-2-A	42.5"	19.7"	II	59.1 lb

OE Attachments

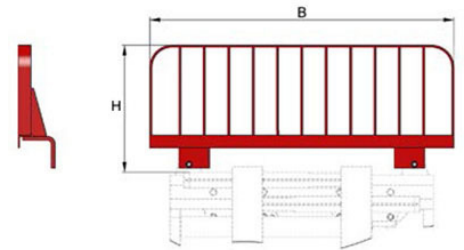


CARTON APPLIANCE CLAMPS



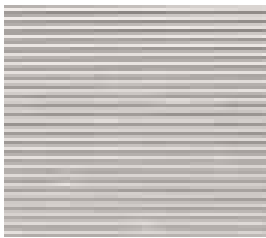
DUAL SWIVELING ARMS

- » Automatic compensation of toe-in
- » Equal distribution of clamping pressure
- » Parallel contact pads



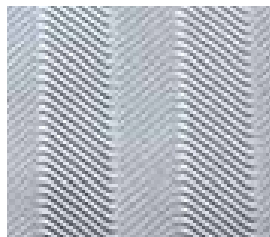
CARTON APPLIANCE CLAMPS Load Backrest models

Product #	B	H	Class ITA	Weight
LBCCB1-425-2-A	42.5"	19.7"	II	59.1 lb



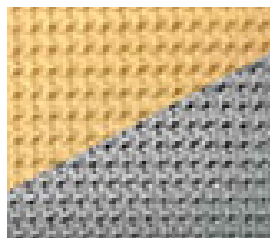
VULCANIZED PADS

- » Highly resilient contact pads
- » Four-piece pad comes standard



BOLTED-ON STEEL RUBBER PLATE

- » Low wear and tear and easy to replace
- » Available for different arm sizes



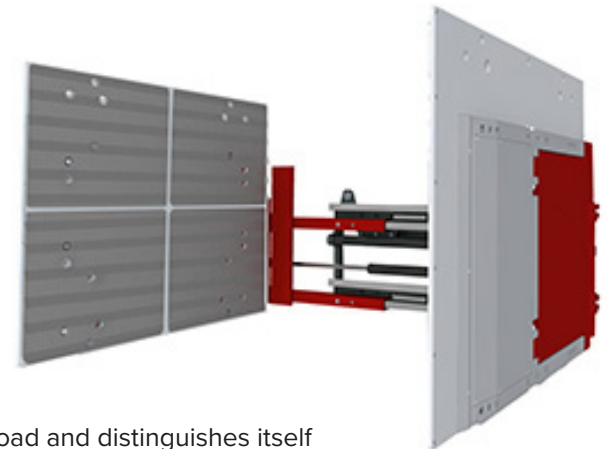
GRIPPING NAP STRAP COATING

- » The yellow coating leaves no marks on the load and distinguishes itself through excellent friction which prevents sliding. The black coating is also highly resistant to wear, therefore, expanding the overall life of the product.



DIAMOND PLATE PADS

- » The pads are an alternative when special shapes and sizes are to be manufactured individually. Suitable for a multitude of applications.



WIDE RANGE of **SIZES** and **CUSTOM OPTIONS** are available.

To get a quote, please call us at
913-599-9040