

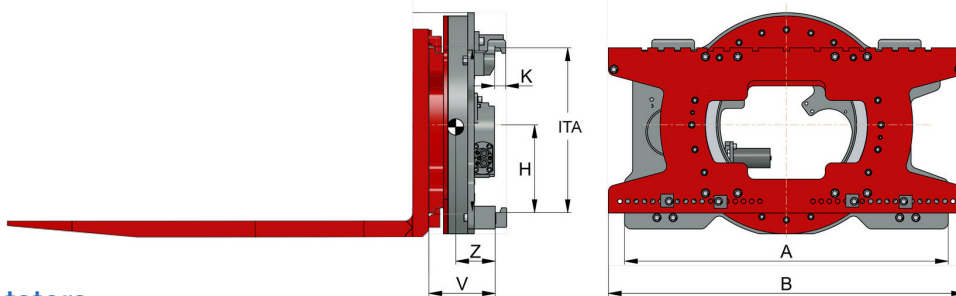
OE Attachments



ROTATORS

OEA-Kaup Rotators

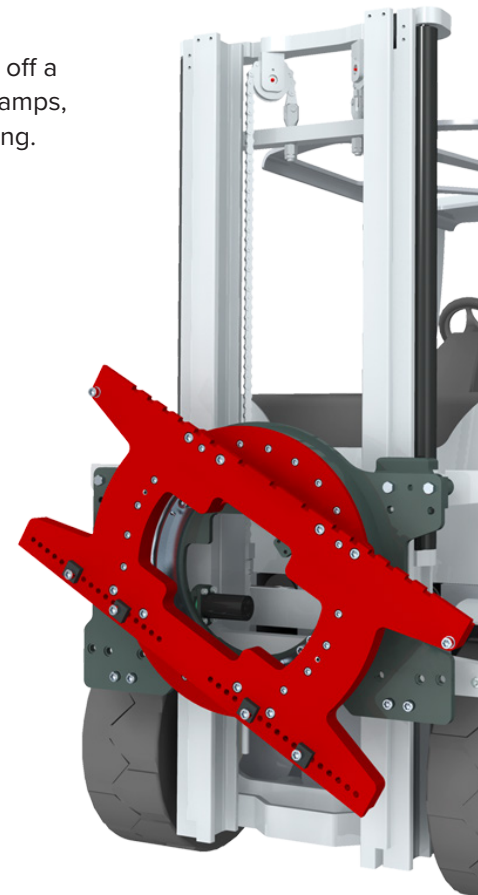
Loads carried by forklifts often need to be rotated, either to empty a container, slide material off a pallet, or set a horizontal load upright. Rotators can be equipped with forks as well as with clamps, booms, or other load-handling attachments. Our Rotators come standard with ITA rail mounting. OEA Kaup Rotators prioritize speed over torque, however, this can be changed should the application/specification require it.



Rotators

Product #	Capacity lb	LCD in	A in	B in	H in	I in	K in	Ft lb @ 1812psi Torque	Gpm Per RPM GPM	ITA class	V in	Z (CofG) Hor. in	Y (CofG) Vert. in	Weight lb
MINIMUM	2,640 lb	--	--	30.7"	--	--	--	--	--	II	--	--	--	--
RO2-033-386-2-A	3,307 lb	24"	30.7"	38.6"	8.1"	11.3"	1.2"	2,218	1.0	II	7.5"	4.4"	8.1"	408 lb
RO2-033-409-2-A	3,307 lb	24"	30.7"	40.9"	8.1"	11.3"	1.2"	2,218	1.0	II	7.5"	4.2"	8"	414 lb
RO2-045-370-2-A	4,592 lb	24"	39.4"	37"	10.6"	13.6"	1.1"	2,840	1.3	II	7.9"	4.4"	10"	556 lb
RO2-045-409-2-A	4,592 lb	24"	39.4"	40.9"	10.6"	13.6"	1.1"	2,840	1.3	II	7.9"	4.4"	10"	562 lb
RO2-058-421-3-A	5,878 lb	24"	39.4"	42.1"	10.6"	13.6"	1.3"	2,840	1.3	III	8.1"	4.8"	10.5"	664 lb
RO2-091-480-3-A	9,193 lb	24"	39.8"	48"	13.3"	15.6"	1.6"	6,601	3.0	III	8.2"	4.4"	12.1"	924 lb
MAXIMUM	17,600 lb	--	--	63"	--	--	--	--	--	--	--	--	--	--

*All dimensional sizes are nominal



Features & Benefits

- » Robust construction that allows for easy maintenance
- » Industry-leading residual capacity
- » Able to use original forks via two mounting clips
- » Square concentric fork retainers that allow for varying fork widths
- » Multiple fork retaining locations for ideal positioning of forks
- » OEA Kaup standard models protect hydraulic motors by positioning behind the body
- » Capacities range up to 55 tons on special order rotators
- » Fishing and Foundry versions available
- » Lateral and vertical support arms available for bin application
- » Unique faceplate design with integrated carriage
- » Many application possibilities

Fork Options

Product #	Fork Size	Fork Size	Fork Size	Fork Size	Fork Size
RO2-033-386-2-A	150-4-36C01902	150-4-42C01902	150-4-48C01902	--	--
RO2-033-409-2-A	150-4-36C01902	150-4-42C01902	150-4-48C01902	--	--
RO2-045-370-2-A	150-5-36C01902	150-5-42C01902	150-5-48C01902	--	--
RO2-045-409-2-A	150-5-36C01902	150-5-42C01902	150-5-48C01902	--	--
RO2-058-421-3-A	175-5-36C01901	175-5-42C01901	175-5-48C01901	175-5-54C01901	--
RO2-091-480-3-A	2-5-42C01901	2-5-48C01901	2-5-54C01901	2-5-60C01901	2-6-48C01901

WIDE RANGE of **SIZES** and **CUSTOM OPTIONS** are available.

To get a quote, please call us at
913-599-9040



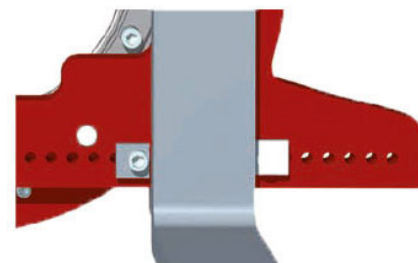
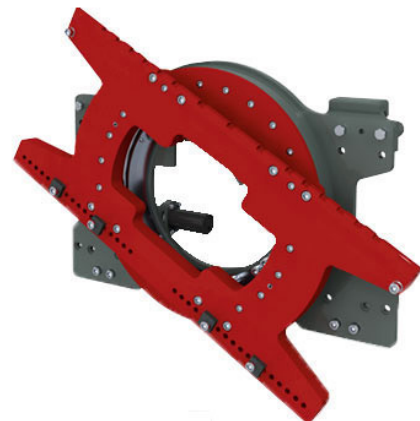
OE Attachments

OE KAUP

ROTATORS

Rotator Model

- » Optimal lost load center ensures industry-leading residual capacities.
- » Optimal visibility. The hydraulic drive is located on the side away from the operator resulting in relatively flat design which does not obstruct visibility.
- » Standard forks (commercially available) can be used. Eccentrically drilled stop blocks, which are part of the delivery, ensure safe fork adjustment. Two-clip design allows for standard forks to be used.
- » Rotators available with **QUICK-RELEASE HOOKS** for assembly or disassembly without tools.
- » Distances between forks, within the fork carriage width, can be chosen as required as the lower fork plate has relevant holes the entire length. Eccentrically drilled stop blocks ensure that any width of fork can be secured firmly.
- » Different rotating speeds and torques with constant oil volume and constant pressure are possible with the same hydraulic motors with different capacities.
- » OEA Kaup Rotators are driven by hydraulic motors and worm gear running through oil. 3 sizes of worm gear and 4 sizes of worm gear allow 9 different sizes of torque.
- » OEA Kaup Rotators require little service. They are manufactured from only a few parts. Straight-toothed slewing rings are standardly used for the bearings. The slewed rings are, depending on the capacity, toothed on the inner or outer side.
- » OEA Kaup Rotators are the basis for all rotating combinations for different customer requirements (rotating Bale Clamps, Drum Clamps, Pallet Turnover\Clamps, Paper Roll Clamps, rotating Fork Clamps and rotating Fork Positioners).
- » Continuous 360° rotation. Can be limited to 180° upon request.
- » OEA Kaup standard Rotators are available with capacities of up to 25 tons; special order Rotators are available with capacities of up to 55 tons.
- » Optional forks are used for 360° operations for loadbearing applications. Standard forks can be used for greater than 90 non-loadbearing applications.



WIDE RANGE of **SIZES** and **CUSTOM OPTIONS** are available.

To get a quote, please call us at
913-599-9040